

PORTABLE SOLUTION

GETTING STARTED

PostScript billed
(black logo)

Phase One A/S
Roskildevej 39
DK-2000 Frederiksberg
Denmark
Tel +45 36 46 01 11
Fax +45 36 46 02 22

Phase One U.S.
24 Woodbine Ave
Northport, New York
11768 USA
Tel +1 631-757-0400
Fax +1 631-757-2217

Notice

The name Phase One is a trademark of Phase One A/S.

The names Apple Macintosh, Sony Vaio and Microsoft Windows are all registered trademarks of their respective companies.

All specifications are subject to change without notice.

Phase One takes no responsibility for any loss or damage sustained while using their products.

This manual ©2003, Phase One A/S Denmark. All rights reserved. No part of this manual may be reproduced or copied in any way without prior written permission of Phase One.

Printed in Denmark.

Part #: 80027001

1 Contents

1 Introduction	2
2 Hardware overview	3
Package contents	3
IEEE 1394 Power Module and charging	4
Dismounting and mounting the battery and belt attachment	4
Removing the battery from the Sony Vaio	5
Detach the belt attachment plate	5
Mounting the IEEE 1394 cable	6
Mounting the Sony Vaio on the belt	8
Practical details when using the belt	9
3 Portable Solution image transfer	11
Transfer setup Sony Vaio to Mac	11
Transfer setup Sony Vaio to PC	13
4 Using the U101 with Capture One	15
Powering up the system	16
Powering down the system	16
Powering down explained	17
Standby mode	17
F-Key shortcuts	18
Browsing the Capture Collection	18
Automatic Gray Balancing	18
5 Power Module and charger	19
Power Module description	19
Host power indicator	20
Battery insertion	20
Charger setup instruction	21
Warning notes!	21

1 Introduction

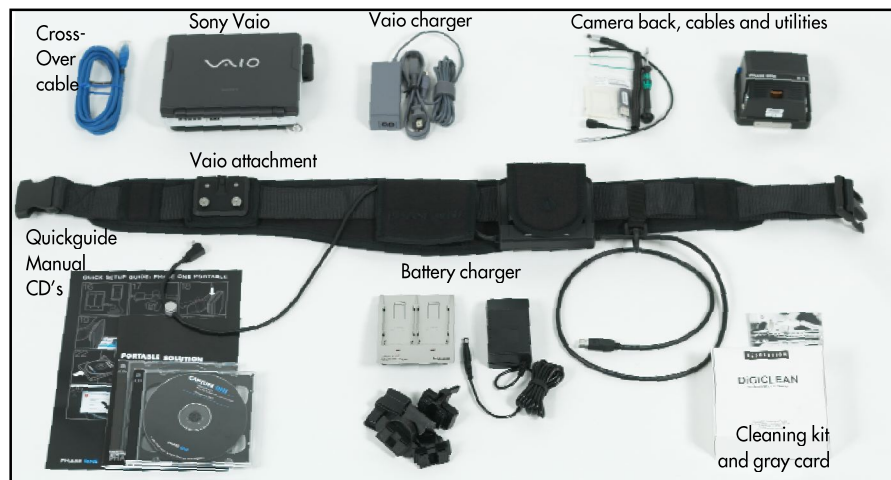
The Phase One Portable Solution encourages all kinds of portable photographic uses from portraiture and on location shooting to capturing fast action and sports. This exiting product lets you work untethered when you are on your own with just as much controle as if you were in the studio.

The functionality of the Phase One Portable Solution is well integrated with all the Phase One single shot camera backs. The Portable Solution belt functions both as a power unit for the camera back and as a holder for the Vaio computer.

The Portable Solution is based on the highly recognised Phase One camera back technology. The application software for Phase One single shot products is the same as for all products. The Capture One User Guide is a general manual for these products. This manual "Portable Solution Getting Started" covers only specific Portable Solution features and functionality.



2 Hardware overview



Package contents

The Phase One Portable Solution belt comes fully assembled, and ready to use.

Still it is recommended to start by charging the Sony Vaio and the two batteries in the Power Module.



Portable Solution Getting Started

IEEE 1394 Power Module and charging

The belt utilises a Power Module carrying two 7.2 volt Lithium-ion batteries to power your Phase One digital back.



The first thing to do is to set up the charger and give the batteries a full charge (approximately 2,5 to 3 hours).

The charger has two red light indicators. While these are lit the battery is not fully charged, and should be left in the charger until the red light starts flashing or preferably turns off to gain a 5 % extra power.

(please read chapter 4, later in this manual)

The charger can adapt to voltage within a range of 110 to 250 volt. It comes with an international set of source outlet adaptors, please select one that fits your outlet, and mount it by sliding it in from the top.

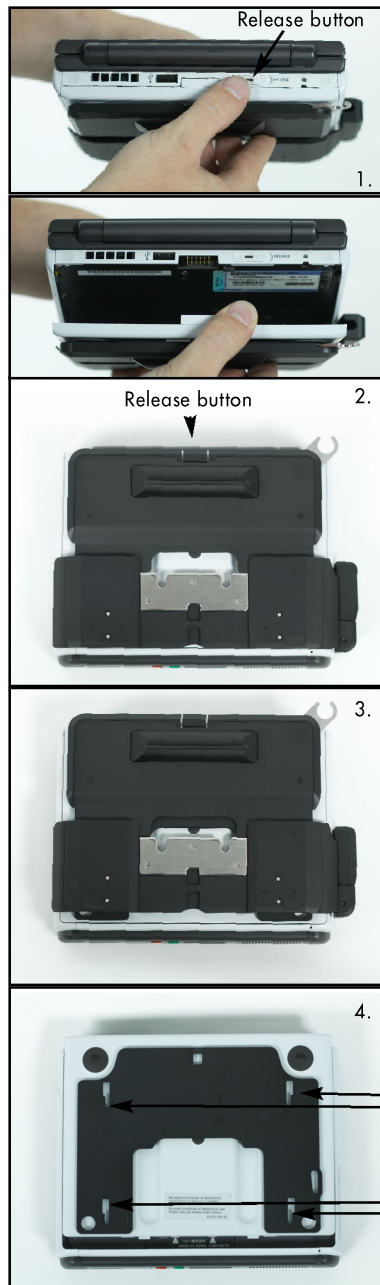
Dismounting and mounting the Battery and Belt attachment

The Phase One Portable Solution belt carries a Sony Vaio PCG-U101.

To enable easy and safe attachment to the belt the Vaio is equipped with a custom made battery with a mounting plate. Extra batteries are available from Phase One as either standard, or extended lifetime (slightly thicker).

While changing the battery is a very straight forward process the task requires you to disconnect the mounting plate from the used battery and clicking it back on the new one.

Portable Solution Getting Started



Removing the Battery from the Sony Vaio:

1. On the back of the Sony Vaio push the release button and slide the battery backwards to release it from the Vaio.

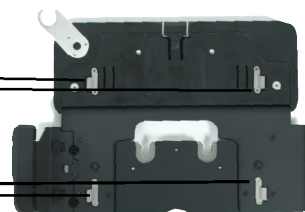
Detach the belt attachment plate:

2. When the Sony Vaio is placed with the back up and the Cable eye pointing away from you, pull gently the release button in the top center.

3. while holding the release button, slide the mounting plate up uncovering a small part of the black battery plate in the opposite end of the Release button.

4. The mounting plate can now be withdrawn from the battery.

The correct mounting of the plate is done in reverse, by aligning the four holes in the black battery plate with the nubs on the belt attachment.



Portable Solution Getting Started

Mounting the IEEE 1394 cable

The Portable Solution cable comes with a cable lock attached approximately 10 cm from the Vaio connector. When mounted correctly this cable lock will ensure that the cable stays in place at all times.

To mount the cable correctly using the cable lock mechanism. Slide the cable lock into the locking eye on the mounting plate as shown.



Portable Solution Getting Started

Turn the cable lock 90 degrees and insert the cable in the IEEE 1394 cable connector under the connector cover.



After insertion of the cable close the connector cover.

H Portable Solution Getting Started

Mounting the Sony Vaio on the belt

Simply hold the Vaio in your left hand with the battery facing downwards, align the nubs on the belt with the holes in the plate and press it down until you hear a click.



The locking mechanism is quickly released again by pushing the lock button on the top of the belt part of the mounting plate.

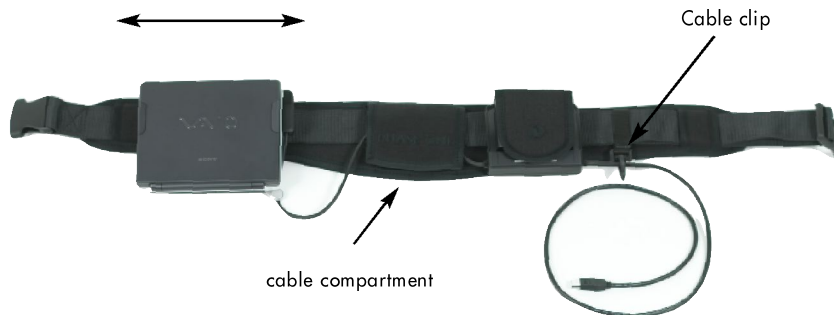


Portable Solution Getting Started

Practical details when using the belt

The Portable Solution belt is designed to be adjusted to fit your waist size, and can be extended at the male end of the quick lock buckle.

The Vaio can slide from side to side for maximum comfort in all situations.



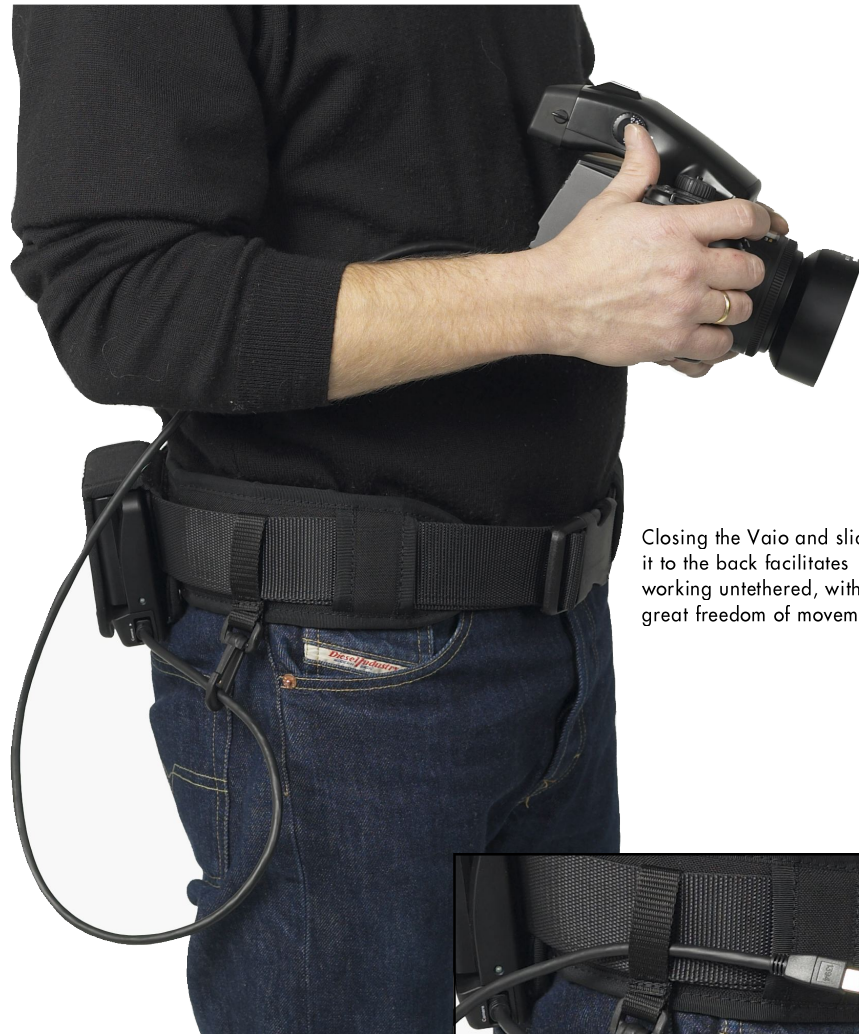
The belt is equipped with a cable compartment between the Vaio and the Power Module where the IEEE 1394 cable can be rolled up thereby adjusted to fit the length of the belt.

At the camera end there is a cable clip that holds the cable and the strap for this clip can also be used to hold the cable, when no camera is connected.



Sliding the Vaio to the front makes it possible to quickly review the captures, using the Vaio pointer control buttons

Portable Solution Getting Started



Closing the Vaio and sliding it to the back facilitates working untethered, with a great freedom of movement.

When the camera is not connected, slide the IEEE 1394 cable under the cable clip strap.



3 Portable Solution Image Transfer

This Chapter will explain you how easy it is to connect and transfer your image from your Sony Vaio to either a Mac or PC computer.

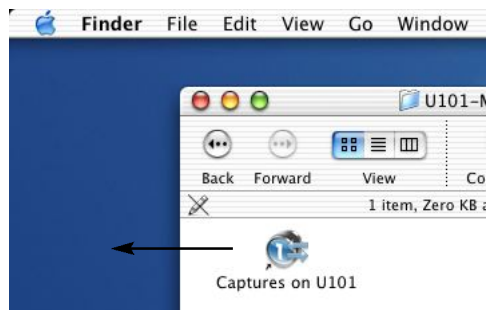
Transfer setup Sony Vaio to Mac.

First connect the Cross-Over cable supplied with your portable solution between the Sony Vaio and Mac as shown below. Connect the cable from the network connection of the Sony Vaio to the Mac network connection.



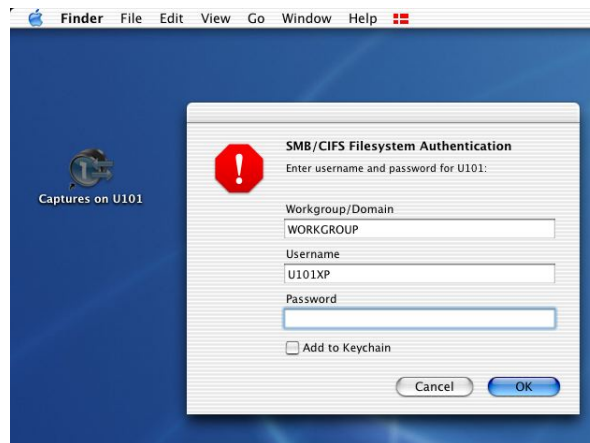
Insert the Phase One Portable Solution Image Transfer CD supplied with your Portable Solution, open the Mac folder on the CD, where you will find a file called "Captures on U101"

Copy the file "Captures on U101" from the CD to you desktop on your Mac.



Portable Solution Getting Started

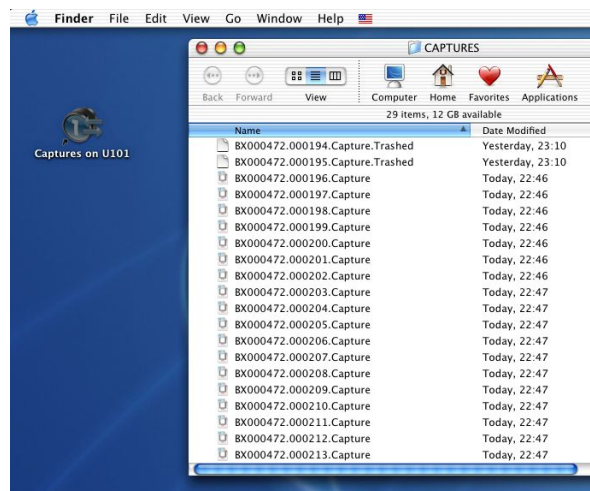
You are now ready to connect between the Sony Vaio and the Mac, bear in mind, it takes up to 70 sec. from when the Cross-Over cable is connected until the connection has automatically been detected on the Sony Vaio and the Mac.



double Click on the “Captures on U101” icon on your Mac desktop .A dialog box will appear as shown here. Leave the “Password” empty, just click “OK”.

The system is setup to connect directly to the Capture folder found on the D: drive on your Sony Vaio,

Copy your files from the Sony Vaio to the Mac by simple drag and drop method.



If you want to create a new capture folder on your capture machine in this case the Sony Vaio, it is recommended to do this inside the capture folder since this will ensure that it is auto-

matically visible when using the above description.

Portable Solution Getting Started

Transfer setup Sony Vaio to PC.

First connect the Cross-Over cable supplied with you portable solution between the Sony Vaio and the PC as shown below. Connect the cable from the network connection of the Sony Vaio to the network connection on the other PC.

Insert the Phase One Portable Image Transfer CD supplied with your Portable Solution, open the PC folder where you will find a folder called "Setup.exe".



The installer will create a shortcut on your desktop called "Captures on U101" .

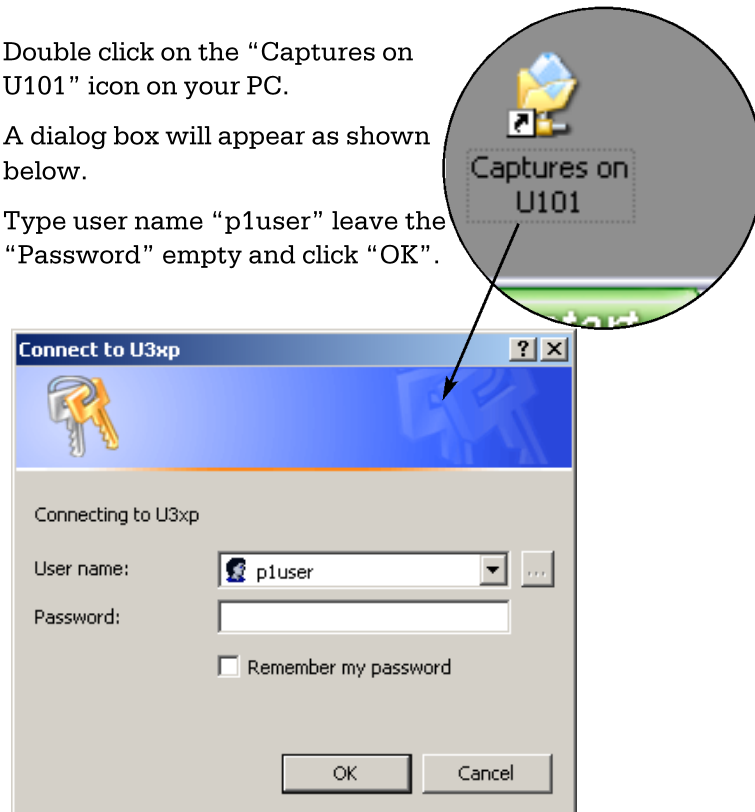
You are now ready to connect between Sony Vaio and the PC, bear in mind it takes up to 70 sec. from when the Cross-Over cable is connected until the connection has automatically been detected between the Sony Vaio and the PC.

Portable Solution Getting Started

Double click on the “Captures on U101” icon on your PC.

A dialog box will appear as shown below.

Type user name “p1user” leave the “Password” empty and click “OK”.



The system is setup to connect directly to the Capture folder found on the D: drive on your Sony Vaio.

Now copy your files from the Sony Vaio to the PC by simple drag and drop method.

If you want to create a new capture folder on your capture machine in this case Sony Vaio, it is recommended to do this inside the capture folder since this will ensure that the capture folder will be visible when following the above description.

4 Using the U101 with Capture One



Portable Solution Getting Started

Powering up the System

As illustrated the Power button is placed in the center of the Sony Vaio.

Use this Power button to startup and power down the system.

The normal working flow would be:

1. Start the computer by pushing the Start button
2. Connect the Phase One Camera Back and turn on the power switch on the Power module
3. Start the Capture One Application by pushing the Capture One Startup button as illustrated.
4. When you hear a bip from the camera back you are ready to shot.

Powering down the system

Powering down the system is pretty simple, one thing to keep in mind though is that Phase one has designed the system not to power down, while a Camera back is attached, and the Capture One Application is running, just to ensure that the Vaio is not mistakenly shut down in a middle of a session.

To power down the system normally, turn off the power switch on the power module in the belt, and push the Power button on the Sony Vaio.

The Sony Vaio will then power down appropriately, even if Capture one is running, and the next time the power button is pushed the Vaio will be ready to shoot at exactly the same setting as when it was power down.

To do a complete shut down of the system, i.e. to reset the system if an error occurs, choose Shut down from the startup menu in the Vaio.

Portable Solution Getting Started

Powering down explained (Hibernate)

Press the Power button and the Vaio goes into sleep mode.
Power down time ~ 15 -20sec.

Press the Power-button and the Vaio comes back to normal operation. Power up time ~ 15 - 20sec.

This setting uses no power consumption at all.

Stand By mode

Press the Standby-button, the Vaio goes into standby-mode.
Power down time ~ 3sec.

Press any key and the Vaio comes back to normal operation.
Power up time ~ 3sec.

Use Stand By mode for minimal power consumption and fast power up/down.

Note: To use the Stand By mode or Power down you always need to disconnect the camera or turn of the Power Module.

This is to ensure that the computer does not go into sleep mode when working with a camera connected.

Always use Power down button when changing the battery in the SONY Vaio.

Portable Solution Getting Started

F-Key shortcuts

F1: Not in use

F2: Shift to collection.

F3: Previous function tab.

F4: Next function tab.

F5: Exposure warning.

F6: Expand preview area.

F7: Full-screen.

F8: Horizontal Collection layout.

F9: Maximize preview.

F10: Not in use.

F11: Toggle between iso-settings .

(Set in preferences / Power and Portability tab).

Browsing the Capture Collection

Use the Left and Right arrow key to browse the Capture Collection.

Use the Home key (Fn + Left arrow key) to go to the first capture in the capture collection.

Use the End key (Fn + Right arrow key) to go to the last capture in the capture collection.

Automatic Gray Balancing

Use Ctrl - w to make an auto gray balancing in the Capture One Software.

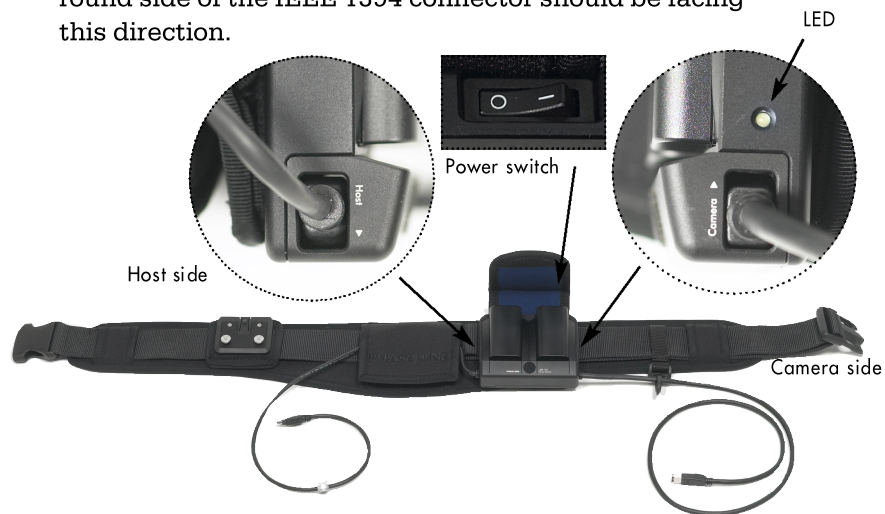
5 Power Module and Charger

Power Module description

The Power Module is equipped with an on/off switch placed right under the hood.

It has also a green LED on the Camera side which when lid indicates that the power is on.

The arrows beside the cable connectors indicates that the round side of the IEEE 1394 connector should be facing this direction.



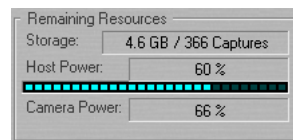
Always leave the Power Module switched of when it is not in use.

H Portable Solution Getting Started

Host power indicator

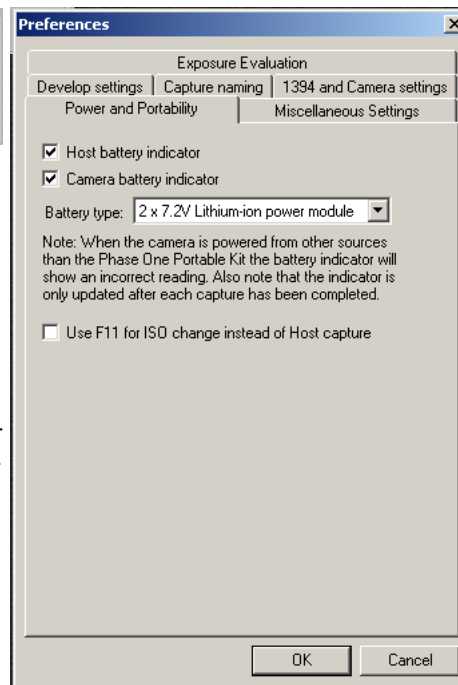
The Capture One application can be set up to show both host power and camera power .

To be able to see the remaining battery of the Power Module, you will have to tell the application, what type of batteries it is using.



In the Preferences Power and Portability Tab select "Camera battery indicator" and select "2 x 7.2V Lithium-ion power module".

The power meter is updated whenever an image is captured so to get an exact reading you have to make a capture.



Battery insertion

Insert the batteries with the contacts facing down and slide the battery fully down into the contacts.

Disconnect the batteries again from the charger or Power Module by pressing the battery slightly against the unit, and at the same time sliding the battery up and lift it off.

Charger setup instruction

Connect the Twin V102 with mains adaptor.

Pull out the foldaway leg.

Insert the battery. The LED for the battery will light up if the battery is correctly connected.

The LED for the second battery may not light up immediately when the battery is connected. If this battery is only partially discharged leave the battery connected, the LED will light up later.

Permanent lighting LED indicates fast charge, when the LED starts flashing the battery is practically full and can be used. If the battery is left in the charger for as long as the LED is still flashing, 5% extra capacity can be gained. All charging is finished when the LED turns off with the batteries connected.

Warning notes!

Only use original mains adaptor 12 V DC.

Never apply excessive force when connecting the batteries.

Keep all contacts clean.

Do not force down any of the contacts.

Do not short cut the contacts.

Never store the batteries connected to a charger for an extensive period of time.

Do not expose to heat or naked flame.

Do not dismantle or carry out any alteration to the product.